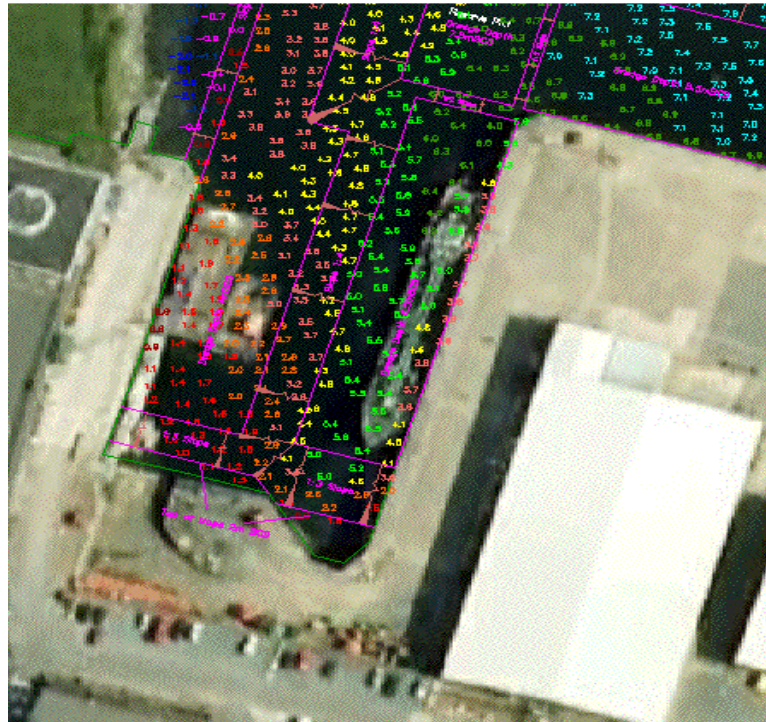




Project Data Sheet



Project

Pembroke Port NAABSA Berth
Investigation into formation of a NABSAA berth in Milford Haven

Client

Milford Haven Port Authority, Pembrokeshire, Wales, UK

Project

Due to changes in trade movements the Pembroke Port wanted to investigate ways of increasing the size of vessels that could use the Port's facilities. One of the options was to allow vessels to take ground at the berth.

ADBP were contracted to investigate the feasibility of establishing a NAABSA (not always afloat but safely aground) berth at the port.

The investigation involved the searching of historical archives to try and ascertain how the original dock base was constructed. Hydrographic and Geophysical investigations were also carried out to ascertain the level of rock head and the depth of overlaying soft sediments.

The results of the investigations were compared against the proposed vessel requirements and recommendations were made on the best way to maximise the use of the facility.

Dates

March 2010

Capital Value

£10,000 (Investigations and reporting alone)